

Can't Stop

Paul Brinnel

Intro

C D-7 G7 C D-7 G7

Island

C CM7/B D-7 G7

C CM7/B D-7 G

Accel. C CM7/B C7/Bb F

F- FM7 F6 F F-/Ab F-M7 F-6/Ab F-/Ab

A/G Ab7 %

Chorus

C# A#- A#-7/G# F# E(9)/C# C#

Motown

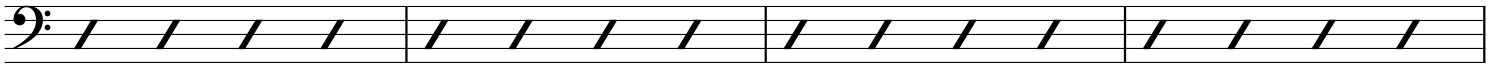
C#7 A#-7 F#7 G° C#

C# D7 D#7 F#7 C#

C#7 D7 D#7 F#7 C#

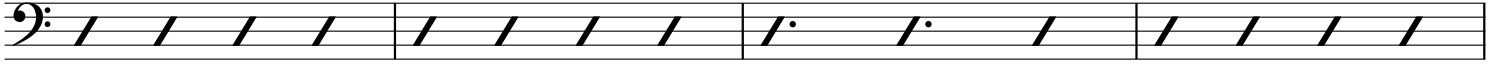
Bridge

C C# C F-

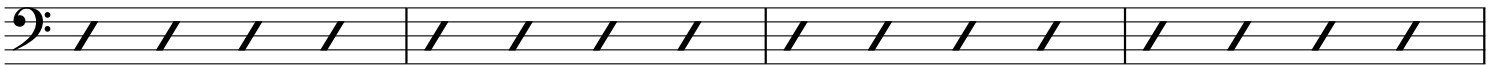


Tango

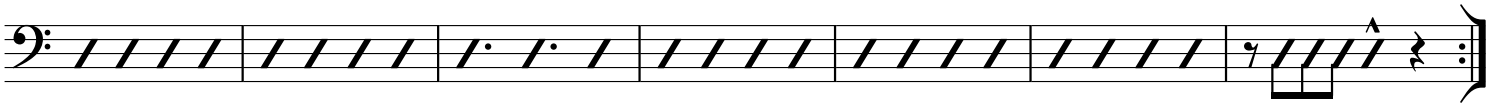
C C# C A#-7 F#7 F-



C C# C F-



C C# C F- C# C A#9 G#7



Outro C# A#- C# A#- Outro C# A#-



Repeat and Fade Out